

GU Ferco Munster Joinery 35/70

1 x Sash/Latch, 2 x Rollers, 1 x Bolt

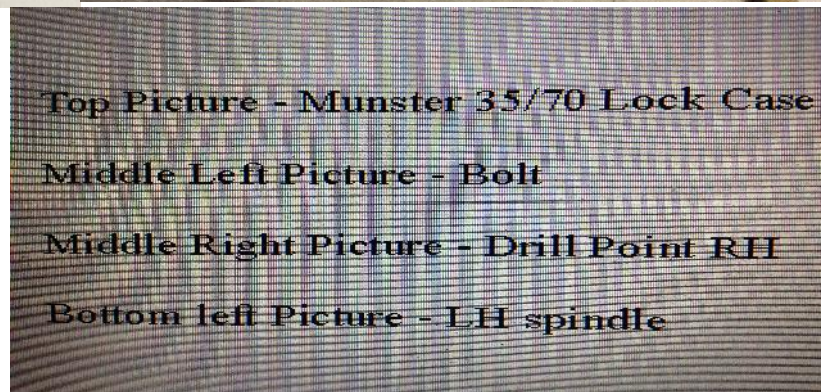
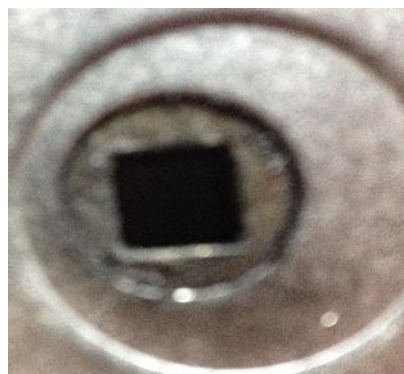
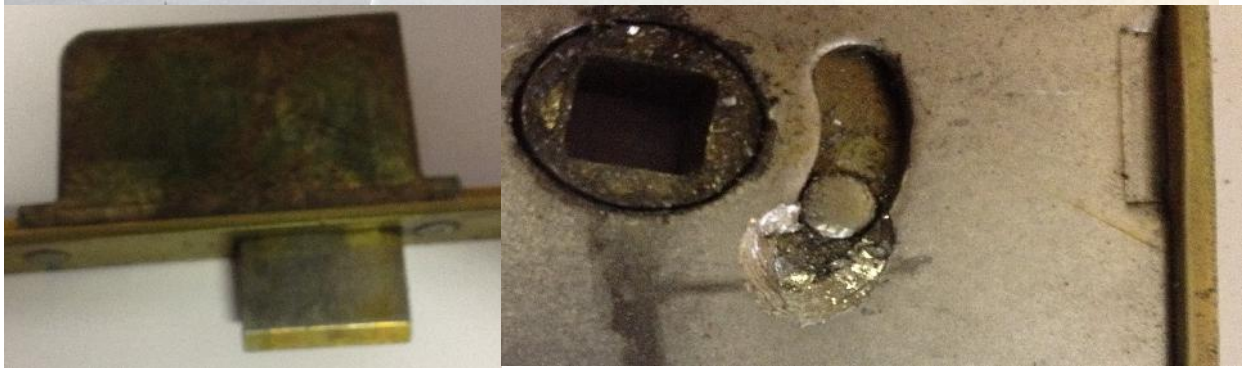
The most frequent problem is caused by the bolt situated in lower half of door. This can be caused by the door being closed with bolt extended or by the wood warping and causing excessive pressure on the bolt entering and leaving the keep resulting a fractured spindle.

From top of keyway 20mm up and 4 mm towards sash/latch for LH then poke at left edge of drill hole forcing away from latch approx. 4mm and this will retract bolt and sash/latch.

From top of keyway 49mm up 8mm away from sash/latch for RH then poke with upward movement 4mm sufficient 6mm full retraction.

If the door is open on arrival but will not lock this is due to bottom bolt. Alter keep to allow for misalignment & oil (the keep will be marked by bolt rubbing on entry).

If this fails then removal of bottom bolt by drilling two joints on face plate removes bolt & box making it now a 3 point 35/70 mechanism.



Top Picture - Munster 35/70 Lock Case

Middle Left Picture - Bolt

Middle Right Picture - Drill Point RH

Bottom left Picture - LH spindle